

# Highland Traveller - Scottish Touch

Mail Order Highland Dress and Kilt Hire

Tel. 01324 717765 - Fax. 01324 719942 - www.highlanddress-hire.co.uk

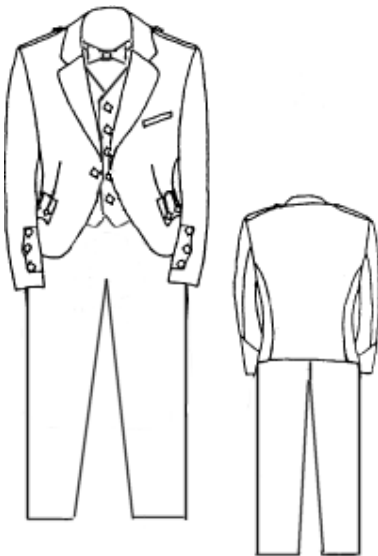
## Mail Order Hire Form

### Outfit Style 4 - Full Braemar Outfit with Trews

Customer name:	
Address:	
Town/City:	
County:	
Post Code:	
Day tel:	

Wearers name	
No of outfits required:	
Delivery date required:	
Return date:	
Mobile tel:	
Email:	

### Braemar with Trews Package Contents



- Braemar Jacket
- High Button Waistcoat
- Dress Shirt
- Black Bow Tie (ready made)
- Black Watch Trews
- Belt & Buckle
- Kilt Hose (socks)
- Gillie Brogue Shoes



### Wearers Details

Please complete all 7 questions

1. Size A - Shirt Collar: \_\_\_\_\_
2. Size B - Chest: \_\_\_\_\_
3. The above is my "Actual Chest Size" / "Jacket Size"
4. Size C - Outside Arm: \_\_\_\_\_
5. Size D - Trews Waist: \_\_\_\_\_
6. Size F - Shoe Size: \_\_\_\_\_
7. Size G - Inside Leg: \_\_\_\_\_

**You can Fax this order form back to us on 01324 719942 or simply call us on 01324 717765  
Once availability has been checked we will call you to confirm your order and finalise the rest of the  
details.**

## Highland Traveller - Scottish Touch

### Mail Order Highland Dress and Kilt Hire

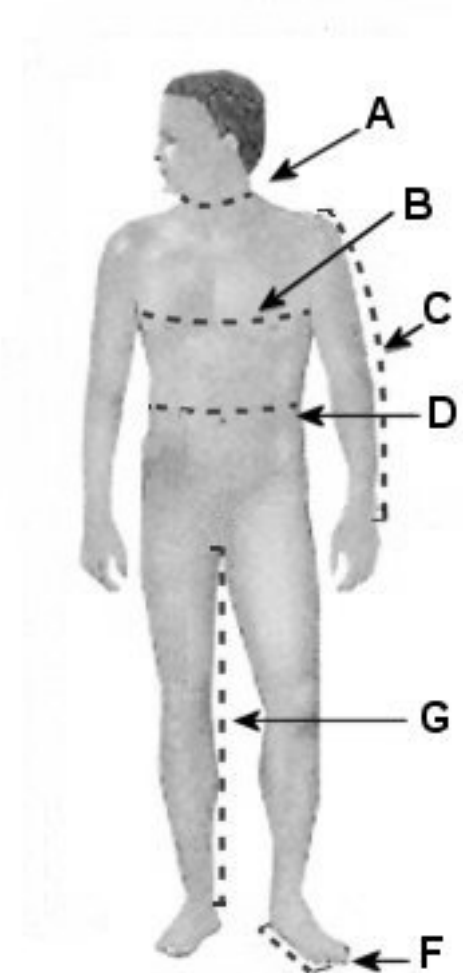
Tel. 01324 717765 - Fax. 01324 719942

[www.highlanddress-hire.co.uk](http://www.highlanddress-hire.co.uk)

NOTE: When measuring the following basic rules should be followed.  
Disregarding these rules may lead to a badly fitting outfit.

- You must use a proper tape measure.
- Do not attempt to measure yourself, have someone do it for you.
- Do not try and read the tape measure as you are being measured.
- Stand up straight and natural. Do not slouch or tense your muscles.

## Measurement Guide



Highland Traveller, Scottish Touch

**Size A - Collar.** If you don't already know your collar size then place the measuring tape around your neck at the point where your shirt collar would sit, this size should be very loose giving yourself plenty of room to move, this size should be around 2 inches larger than your actual neck size.

**Size B - Chest Size.** Hold your arms out about 2 feet from your body, then place the tape measure around your body, just below your armpits. This size should be loose, now add 1.5 inches to your size, this will be your jacket size.

**Size C - Arm Length.** You can either measure the outside arm length on a good fitting jacket that you may have or run your tape from the top of your arm down to your wrist bone.

**Size D - Trews Waist.** This size should be taken over your shirt. Wrap the tape around your body at the point just above your navel; pull the tape until it feels comfortable but firm.

**Size F - Shoe Size.** Simply the size of shoe you require.

**Size G - Inside Leg.** This is your inside leg measurements for your tartan Trews. This size is optional, Trews can be received un-hemmed and therefore can be tacked to length by yourself once you try them on. A better fitting length will be achieved this way.

## Highland Traveller – Scottish Touch

Mail Order Highland Dress and Kilt Hire